

# ECHOPANEL: ECHOSCREEN PLATOON



EchoScreen Platoon



EchoScreen Platoon I Color 325 (Viridian Green) with Charcoal Hardware

|                                 | Metric          | Standard             | Thickness | Weight/Screen | SF/Screen |
|---------------------------------|-----------------|----------------------|-----------|---------------|-----------|
| Platoon Panels (fully extended) | 3500mm x 1750mm | 137.8 in. x 68.9 in. | 24mm      | 30.42 lbs     | 65.92     |

The dimensions above refer to the maximum extended length for stability. To stand freely, Platoon component panels must be angled and a shorter usable length will apply. EchoScreen Platoon is sold as a complete unit with six components (one female end panel, four center panels and one male end panel) plus 10 modular joiners. Due to the nature of the material, cutting and fabrication process, minor dimensional variances may occur. All specs refer to singular products and not multiples unless specified. See reverse page for Platoon screen diagram.

## EchoScreen Platoon

Office needs change every day, so you need furnishings that can change in a flash. EchoScreen Platoon is a complete set of modular panels with multiple possible configurations that helps make your office, lobby, performance space — even your home — into the creative space you need. EchoPanel® acoustic panels absorb sound, helping reduce distraction and inspire creativity. They're made from 100% PET with at least 60% recycled, helping to reduce waste in our ecosystems.

## NRC (SOUND ABSORPTION RATING): ASTM C423-90A

Standard EchoPanel NRC acoustic data is available for acoustic calculations. Please contact Kirei for this test data.

## Fire Rating

ASTM E84 Class B

## VOC Emissions

CDPH (CA 01350) Compliant; TVOC: <0.5 mg/m3  
 Ecospecifier GreenTag Compliant;  
 TVOC: 0.015 mg/m2/hr (ASTM D5116)



EchoScreen Platoon I Color 542 (Charcoal)

# ECHOPANEL: ECHOSCREEN PLATOON

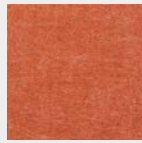
## Available Solid Colors



101 | Frost



269 | Wine



295 | Dark Orange



325 | Viridian Green



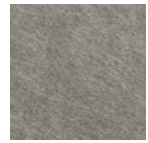
330 | Ivy



365 | Navy



384 | Seaweed



402 | Taupe



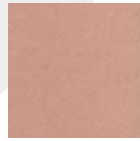
442 | Speckled Gray



454 | Mushroom



468 | Vanilla



487 | Blush



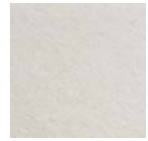
542 | Charcoal



550 | Onyx



633 | Pacific

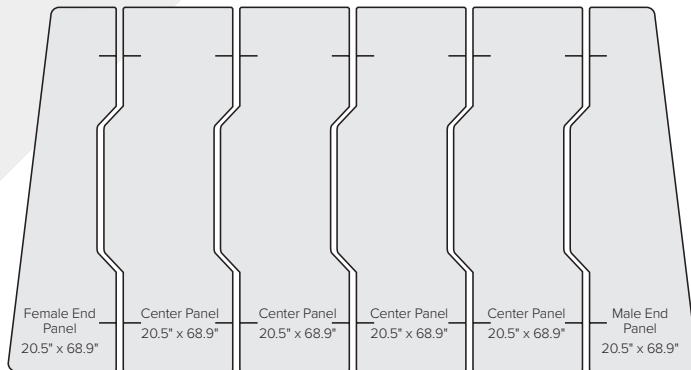


908 | Ivory

## Available Design Styles

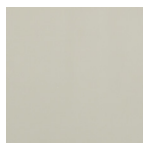
### Platoon Panels

Maximum recommended extended length is approximately 100 feet.

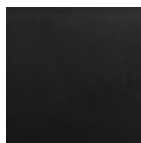


## Hardware

### Available Hardware Colors



Cream



Charcoal



Copper

### Joiners

Panels are assembled using 10 included modular joiners. Pivot joiners fold 360° for pack-flat storage of complete systems.



Pivot Joiner