

Platoon Partition I Color 442 (Speckled Gray)  
with Charcoal Hardware



Paling Partition I Color 325 (Viridian Green) with Cream Hardware

	Metric	Standard	Thickness	Weight	SF/Piece
End Panel	285mm x 1750mm	11.2 in. x 68 in.	24mm	5 lbs	5.3
Mid Panel	285mm x 1750mm	11.2 in. x 68 in.	24mm	5 lbs	5.3

*Due to the nature of the material, cutting and fabrication process, minor dimensional variances may occur. All specs refer to singular products and not multiples unless specified. See reverse page for Paling screen diagram.*

## Paling Partitions

Office needs change every day, so you need furnishings that can change in a flash. The EchoPanel® Paling Partitions are a reconfigurable partition system with a “kit of parts” that can be assembled using our standard joiners to quickly create flexible collaborative workspaces, room dividers and single desk private spaces. Paling panels pack flat for easy storage and break down and set up in minutes. EchoPanel acoustic panels absorb sound, helping reduce distraction and inspire creativity, and are made from recycled plastic soda bottles for a great green story as well.

## NRC (SOUND ABSORPTION RATING): ASTM C423-90A

Standard EchoPanel NRC acoustic data is available for acoustic calculations. Please contact Kirei for this test data.

## Fire Rating

ASTM E84 Class B

## VOC Emissions

CDPH (CA 01350) Compliant; TVOC: <0.5 mg/m<sup>3</sup>

Ecospecifier GreenTag Compliant;  
TVOC: 0.015 mg/m<sup>2</sup>/hr (ASTM D5116)



Paling Partition I Color 542 (Charcoal) with Copper Hardware

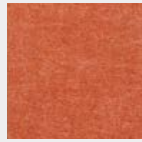
# ECHOPANEL PARTITIONS: PALING

kirei

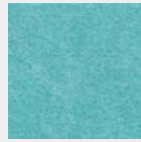
## Available Solid Colors



101 | Frost



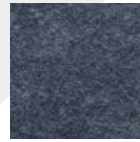
295 | Dark Orange



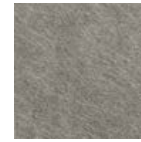
325 | Viridian Green



330 | Ivy



365 | Navy



402 | Taupe



442 | Speckled Gray



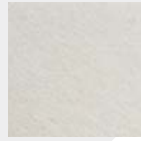
468 | Vanilla



542 | Charcoal



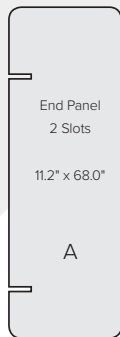
550 | Onyx



908 | Ivory

## Available Paling Partition Styles & Configurations

### Paling Screens



### Recommended Configurations

Paling panels must have enough angled joints to stand freely.



Configuration A



Configuration B



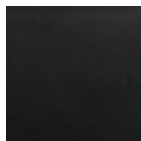
Configuration C

## Hardware

### Available Hardware Colors



Cream



Charcoal



Copper

### Joiners

Panels are assembled using 10 included modular joiners. Pivot joiners fold 360° for pack-flat storage of complete systems.



Straight Connector



120-Degree Connector



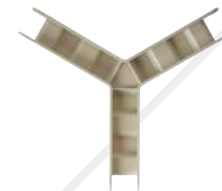
X Connector



90-Degree Connector



T Connector



Y Connector



Pivot Joiner