



EchoFold & EchoFold ACT Installation Guide

Note: Please read the entire Installation Guide before application.

The installation guide is intended to provide installers with helpful information regarding EchoFold and EchoFold ACT prior to installing the material. Kirei accepts no responsibility for installation actions taken or not taken. This installation guide is not intended to be an in-depth guide; installer's knowledge as an experienced tradesman needs to be applied.

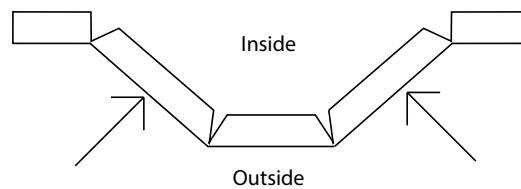
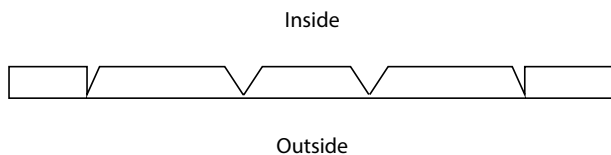
This installation guide serves only as a recommendation for installing and handling EchoFold and EchoFold ACT. If you have questions about application or techniques, contact Kirei at www.kireiusa.com or 619.236.9924.

EchoFold Installation

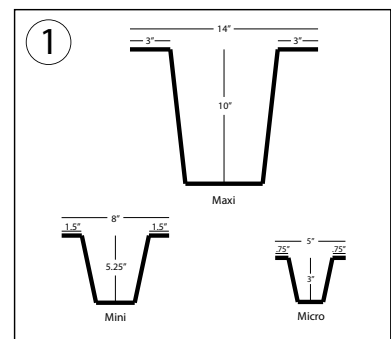
EchoFold is installed by folding material at precut seams and attaching to the wall or ceiling surface with the appropriate adhesive. Please contact Kirei to request a sample to test install.

Recommended adhesives: Liquid Nails, Loctite® PL Premium® Polyurethane Construction Adhesive, Loctite PowerGrab White.

Note: Before install, flex the joints of the EchoFold as the material may be stiff when received from the factory.



1. Measure and mark the wall/ceiling/substrate that the EchoFold will be mounted to.
 - A. Starting from one side, begin with level lines the full length of the install.
 - B. Mark the spacing along the level lines.
 - i. Maxi – 14"
 - ii. Mini – 8"
 - ii. Micro – 5"



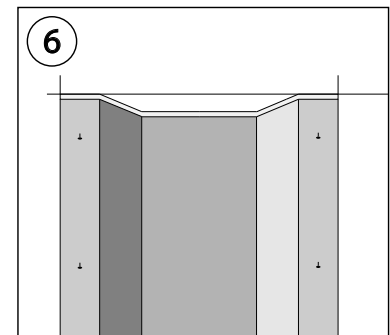
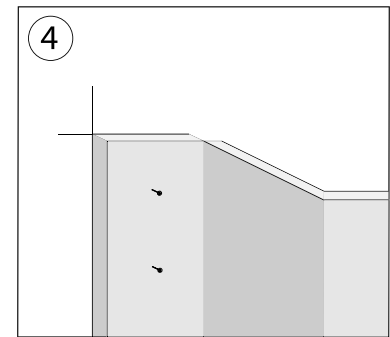
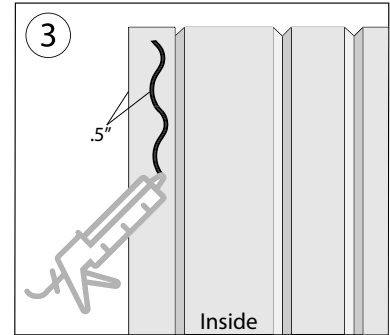
EchoFold & EchoFold ACT Installation Guide

Installation Cont.

2. The best practice is to start the install from one side of your substrate and work your way across. Check regularly that components are level and square.
3. Begin by lying the component outside facing down on a clean surface and running a bead of construction adhesive along one of the flanges. Be sure to inset glue bead a half inch from the outside edge to prevent adhesive from squeezing out from beneath the panels.
4. Align the first edge with the pre-measured marks on the substrate. Press and hold firmly in place with a small removeable mechanical fastener until adhesive is set. Small gauge finish nails (18ga-22ga) can be used to hold EchoFold flange in place while the adhesive sets. Since holes will be visible upon removal, but sure to measure and align for best visual. We recommend confirming with the architect for approval. Check adhesive instructions for appropriate open times.

Note: Installation using decorative-head mechanical fasteners provides both a simple and potentially removable solution for the Designer/Architect to specify. In addition, EchoFold can be ordered with precut holes in the flanges.

5. With one half of the component attached to the wall, run a bead of glue on the inside of the other flange. Take care to prevent the adhesive from dripping, spreading or contacting onto other surfaces.
6. Fold the component into its position making sure to carefully align the edge to pre-established marks. Press flange to surface and hold firmly with small removeable mechanical fastener.
7. Continue onto the next component and repeat steps 3-6.
8. Once the adhesive has cured (per manufacturer specifications) the mechanical fasteners may be removed.





EchoFold & EchoFold ACT Installation Guide

EchoFold ACT Installation

Always make sure your platform or ladder is safe and secure before ascending.

1. Ensure all surfaces and T-grid are clean prior to installation to prevent scuffs and staining.
2. Make sure hands and/or gloves are clean before handling the material.
3. EchoFold ACT installs just like standard ACT tiles. Hold EchoFold ACT flat side up (so that the folded elements are facing down). Please ensure that you have 8"-10" unobstructed clearance above the T-Grid to ensure the EchoFold ACT can pass through the opening.
4. Angle the tile so that you can insert one end in first.
5. Insert the tile almost completely into the ceiling.
6. Carefully drop tile into place, ensuring that the T-grid doesn't scrape the edges.
7. Visually inspect all four corners checking that they are properly seated.



Note: Tiles are cut on a grain and can reflect light differently, looking slightly lighter or darker depending on placement. When applying the tiles, ensure the color of the tiles complements your light source. Rotate the tile if color varies from the adjacent tile.

Work Safety

In the interest of work safety, it is recommended that people working with EchoFold and EchoFold ACT wear the appropriate safety equipment. Although the product emits zero off-gases, masks and gloves should be worn to ensure the maximum possible safety precautions. For an SDS form, please contact Kirei at info@kireiusa.com or 619-236-9924.

Final Note

Kirei will not be responsible for any cutting or mounting not performed by Kirei staff.

For any other questions or concerns, please contact Kirei.