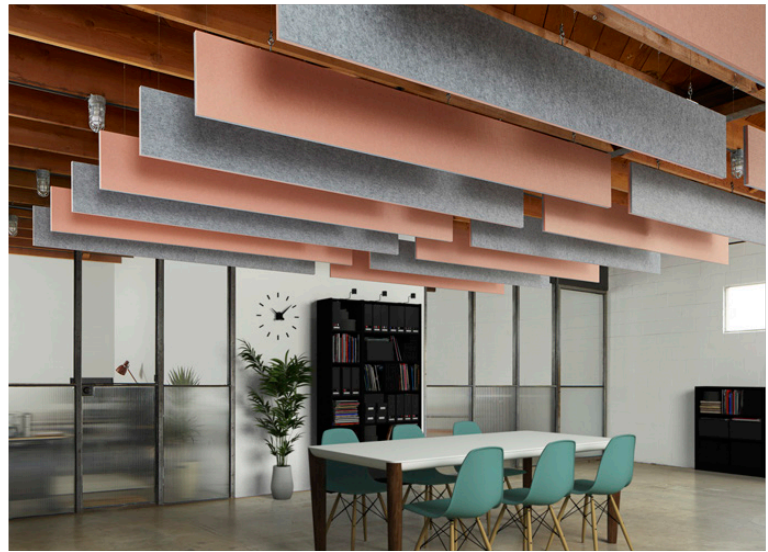


I-Baffle



I-Baffle | Colors 442 (Speckled Gray), 487 (Blush)

Style	Metric	Standard	Width	Weight	LF/Unit
40" Length Baffle	1016mm x 292.1mm	40 in. x 11.5 in.	24mm (1 in.)	3.5 lbs	3.3
48" Length Baffle	1219.2mm x 292.1mm	48 in. x 11.5 in.	24mm (1 in.)	4 lbs	4
72" Length Baffle	1828.8mm x 292.1mm	72 in. x 11.5 in.	24mm (1 in.)	6 lbs	6
96" Length Baffle	2438.4mm x 292.1mm	96 in. x 11.5 in.	24mm (1 in.)	8 lbs	8

All specs refer to singular products and not multiples unless specified. Due to the nature of the material, cutting and fabrication process, minor dimensional variances may occur.

**Sound Absorption**

Frequency	250Hz	500Hz	800Hz	1000Hz	2000Hz	4000Hz	Average
m <sup>2</sup> /Object	3.40	4.21	4.71	5.08	5.35	2.23	3.66

Acoustic data is measured in Sabins per I-Baffle.

**I-Baffle**

I-Baffle is an acoustically and visually enhanced extension of Kirei's Simple Baffle. The I-Baffle is composed of two 12mm EchoPanel® panels attached back-to-back, providing increased acoustic control with an added element of color customization - pick two similar or different panel colors to create new visual effects. Hang I-Baffles in regular rows, random groupings, or with other baffle systems to create beautiful architectural design solutions. Custom configurations available.

**Fire Rating**

ASTM E84 Class C (Class A achievable with treatment.)

**VOC Emissions**

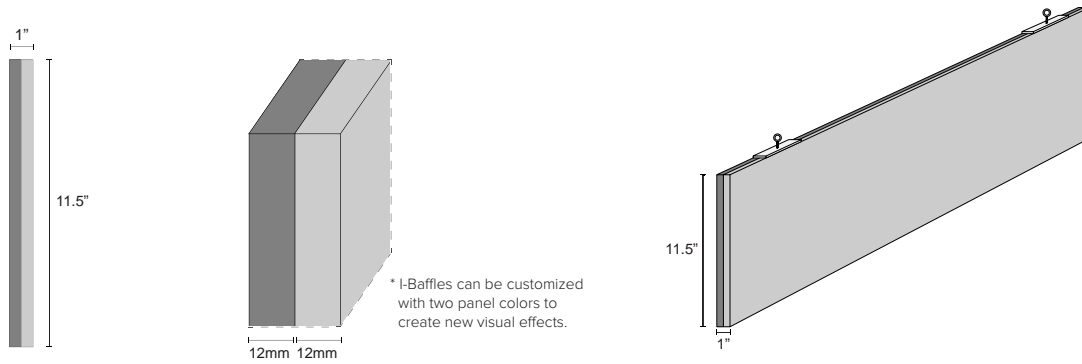
CDPH (CA 01350) Compliant; TVOC: <0.5 mg/m3  
 Ecospecifier GreenTag Compliant;  
 TVOC: 0.015 mg/m2/hr (ASTM D5116)



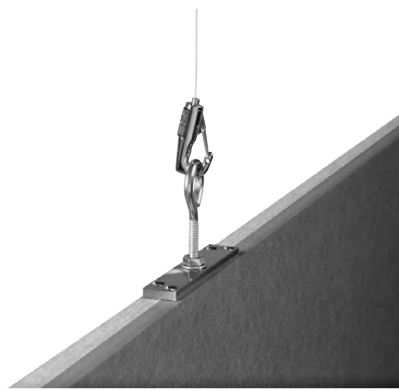
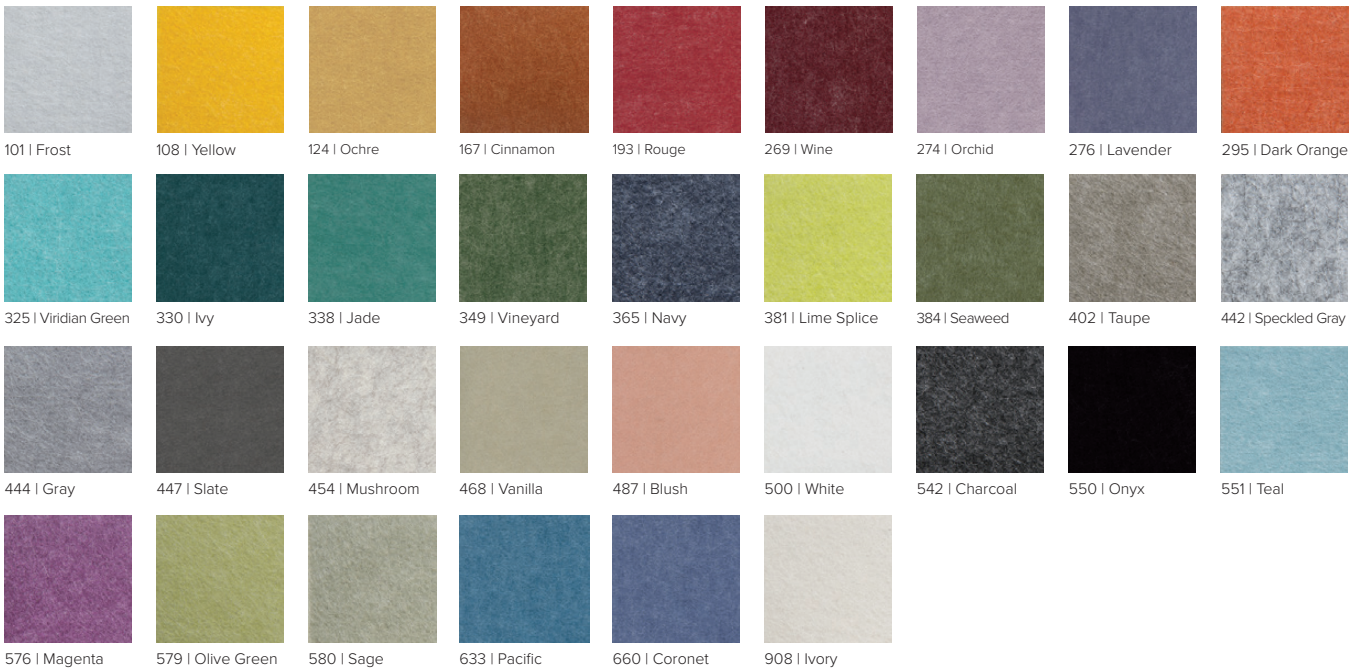
I-Baffle | Colors 442 (Speckled Gray), 338 (Jade)

# ECHOPANEL: I-BAFFLE

## Dimensional Detail



## Available Solid Colors



1/4\"-20 Male Threaded Screw Mounting Hardware

## Hardware & Installation

I-Baffles have two attachment points with a 1/4\"-20 female thread and come with your choice of eyebolts or 1/4\"-20 male threaded screw hardware.

To install I-Baffles, attach the specified ceiling mounting hardware and suspension cable/chain/rod/etc. with the appropriate connector at the bottom end. Once the ceiling hardware is installed, attach the connector to the supplied attachment hardware on the I-Baffle.

*Note: Kirei does not provide ceiling mounting hardware or cable/chain/rod.*