

EchoStar +



EchoStar + | Color 660 (Coronet)

EchoStar & EchoStar +

EchoStar + is one of Kirei’s most dimensional and unique ceiling products that is favored for its functionality and aesthetic. EchoStar + allows designers to express design values while simultaneously helping room occupants communicate freely with minimal noise disruption. While EchoStar is made with 7mm EchoPanel® (recycled PET felt) and limited to 5 grayscale colors, EchoStar + is crafted with the 12mm option, which comes in over 30 vivid colors and offers superior sound absorption. Its unique diamond facets diffuse noise while the PET felt faces absorb sound waves, controlling echoes in large, open concept environments.

| Style | Metric | Standard | Depth | Thickness | Weight/Unit | SF/Unit |
|------------|-----------------|---------------------|---------|-----------|-------------|---------|
| EchoStar | 910mm x 792.5mm | 35.8 in. x 31.2 in. | 139.7mm | 7mm | 8 lbs | 5.84 |
| EchoStar + | 910mm x 792.5mm | 35.8 in. x 31.2 in. | 144.7mm | 12mm | 8 lbs | 5.84 |

Sound Absorption EchoStar

| Frequency | 250Hz | 500Hz | 800Hz | 1000Hz | 2000Hz | 4000Hz | NRC |
|------------------------|-------|-------|-------|--------|--------|--------|---|
| m ² /Object | 2.40 | 4.26 | 4.78 | 4.94 | 5.48 | 6.08 | 0.40-1.00 (determined by installation) |

Acoustic data is measured in Sabins per 7mm EchoPanel.

Sound Absorption EchoStar +

| Frequency | 250Hz | 500Hz | 800Hz | 1000Hz | 2000Hz | 4000Hz | NRC |
|------------------------|-------|-------|-------|--------|--------|--------|---|
| m ² /Object | 2.84 | 4.94 | 5.55 | 5.79 | 6.88 | 7.12 | 0.50-1.20 (determined by installation) |

Acoustic data is measured in Sabins per 12mm EchoPanel.

Fire Rating

7mm EchoStar: ASTM E84 Class C
(Class A achievable with treatment.)

12mm EchoStar +: ASTM E84 Class A

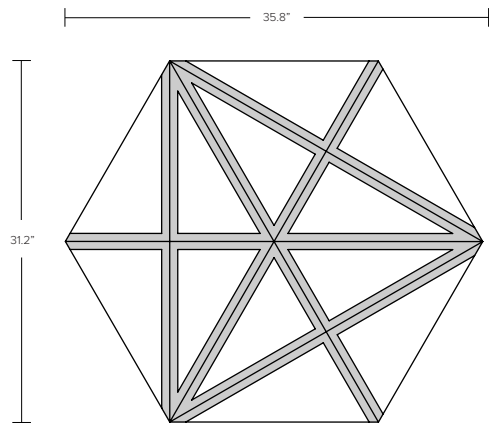
VOC Emissions

CDPH (CA 01350) Compliant; TVOC: <0.5 mg/m³

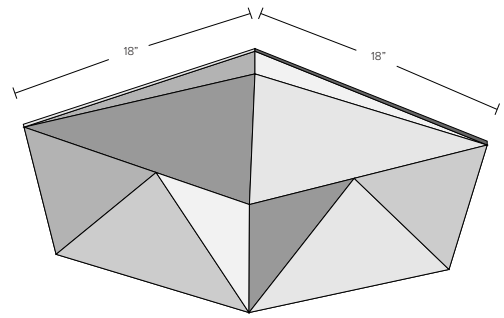
Ecospecifier GreenTag Compliant; TVOC: 0.015 mg/m²/hr (ASTM D5116)

ECHOPANEL: ECHOSTAR & ECHOSTAR +

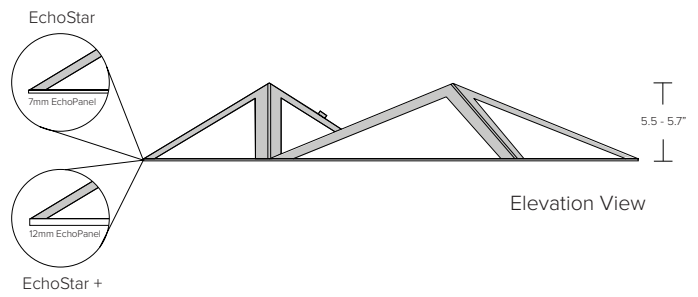
Dimensional Detail



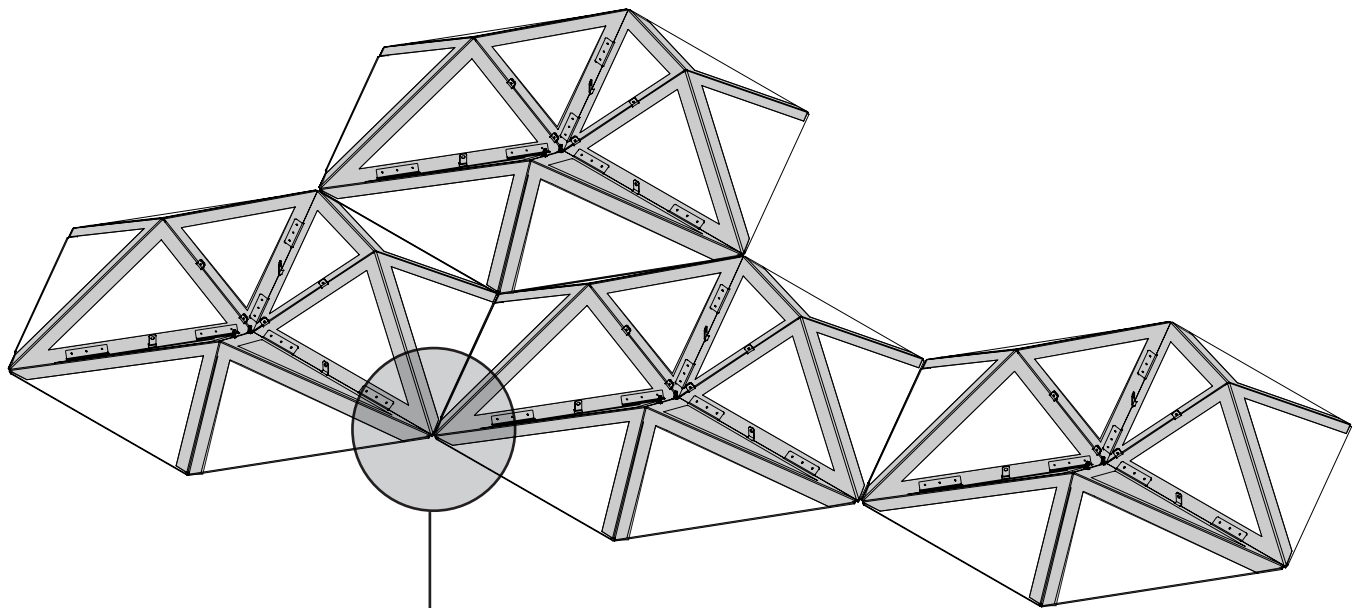
Plan View



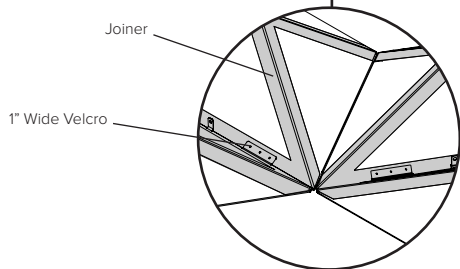
Direct View



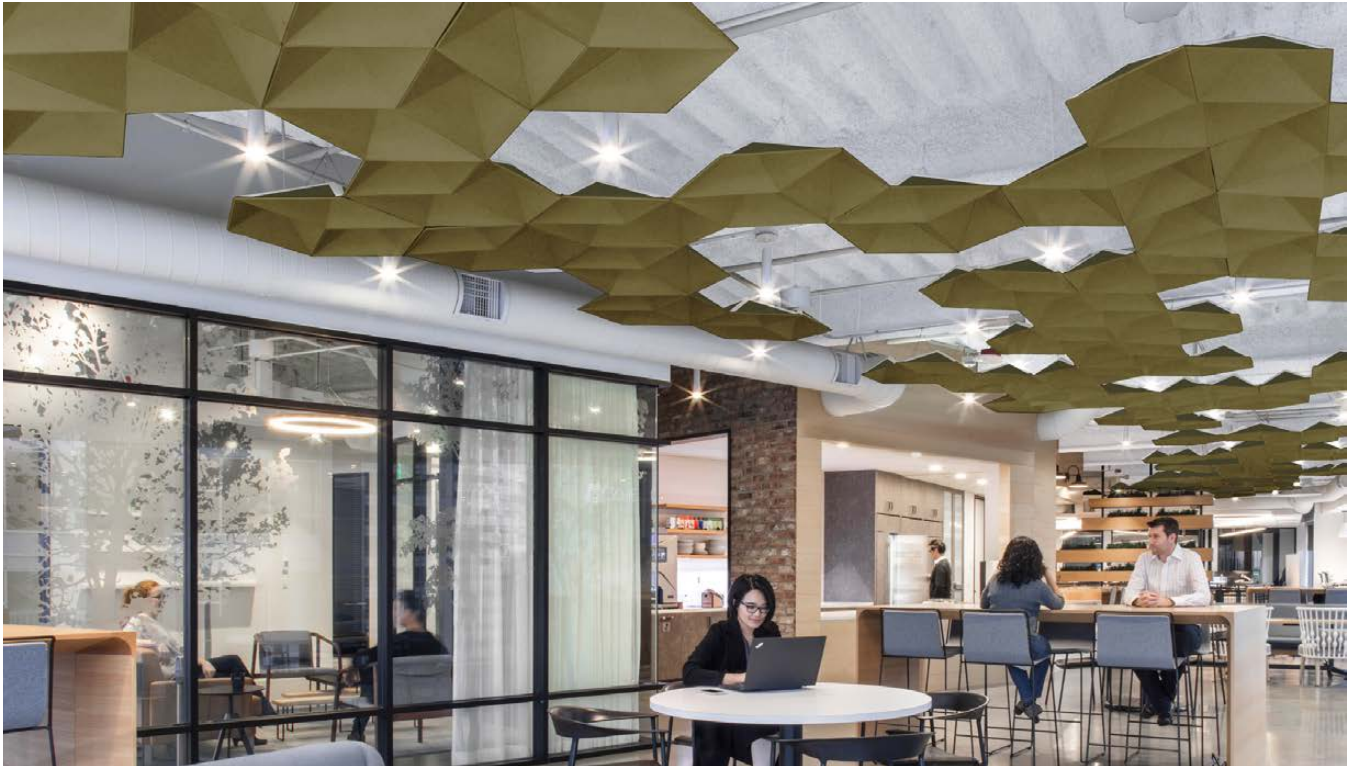
Elevation View



Assembly View



Joiner Detail

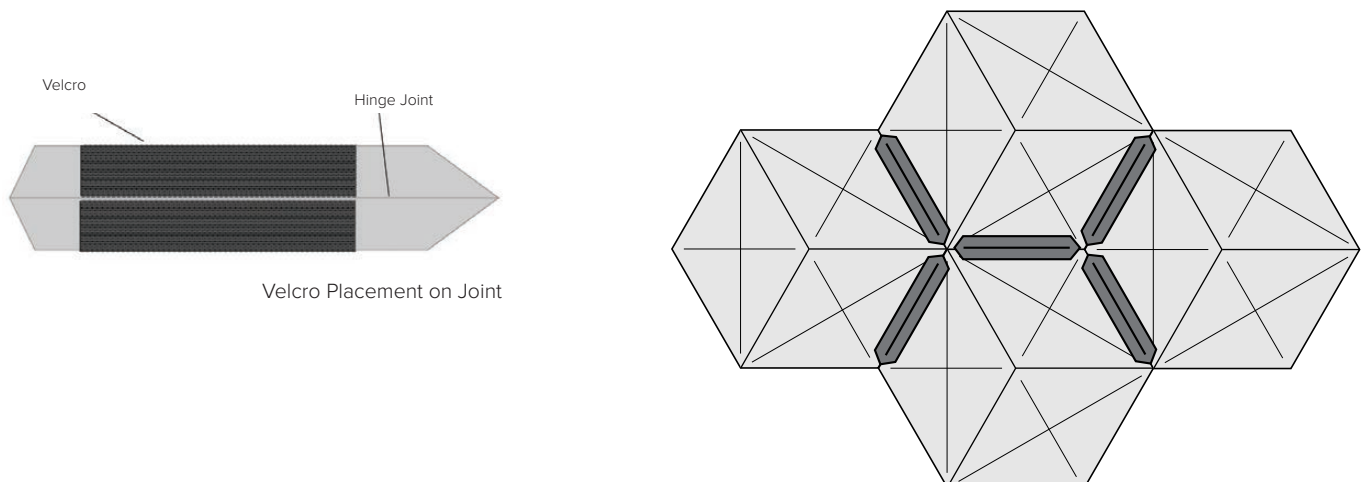


EchoStar + | Color 384 (Seaweed)

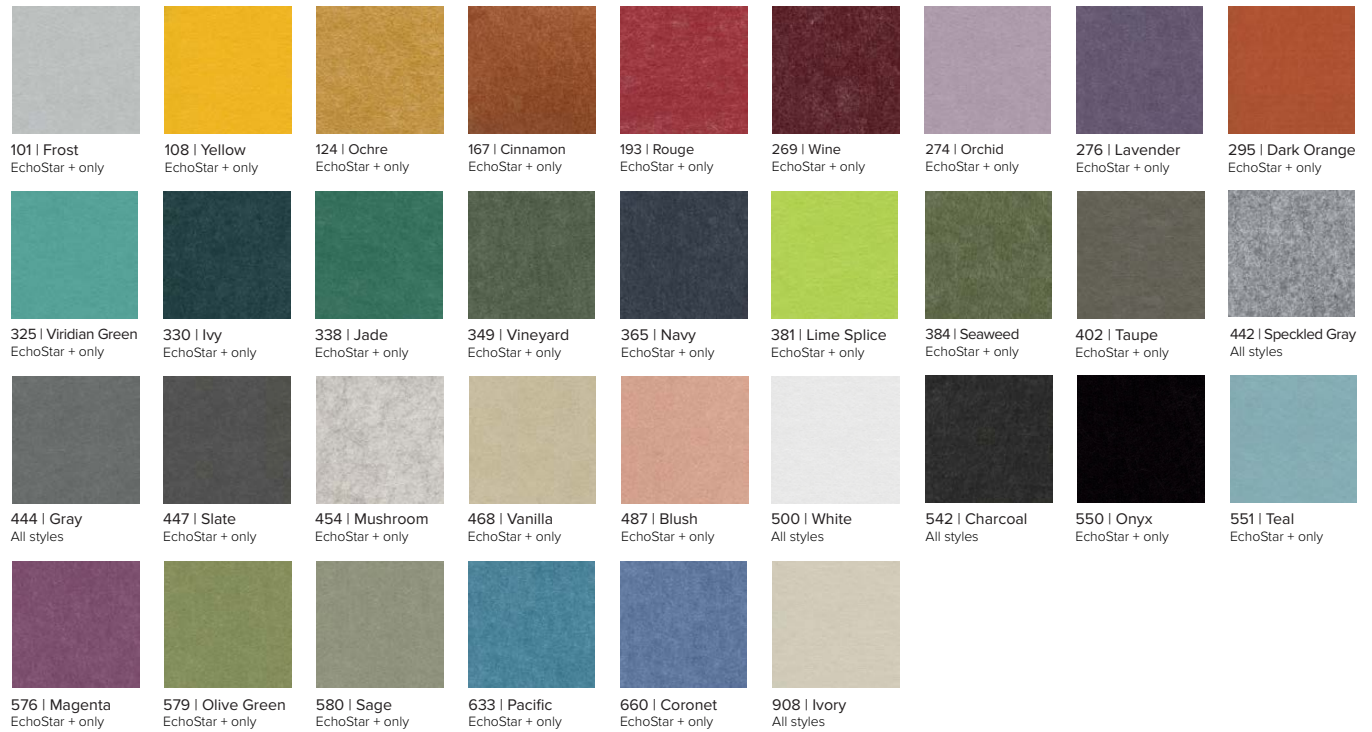
Hardware

Joiners are used to unify EchoStar + clusters at each adjoining flat edge where two EchoStar +'s meet. When ordering multiple EchoStar + units to be hung in groups, order one Joiner bracket for each pair of edges where EchoStar +'s meet (i.e., one bracket per joint).

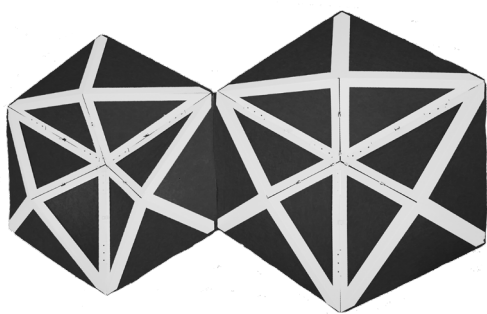
Each Joiner is supplied with peel-and-stick Velcro ready for application. Peel backer from exposed Velcro and attach adhesive side to EchoStar + exposed EchoPanel.



Available Solid Colors



Customizable Frames & Installation



EchoStar + frames come standard in white but can be customized to any RAL color as a custom option.

EchoStar +'s can be ceiling hung using cable and appropriate ceiling mounts. (Ceiling mounts and cable not provided.)



EchoStar + | Color 545 (Charcoal) with White frames