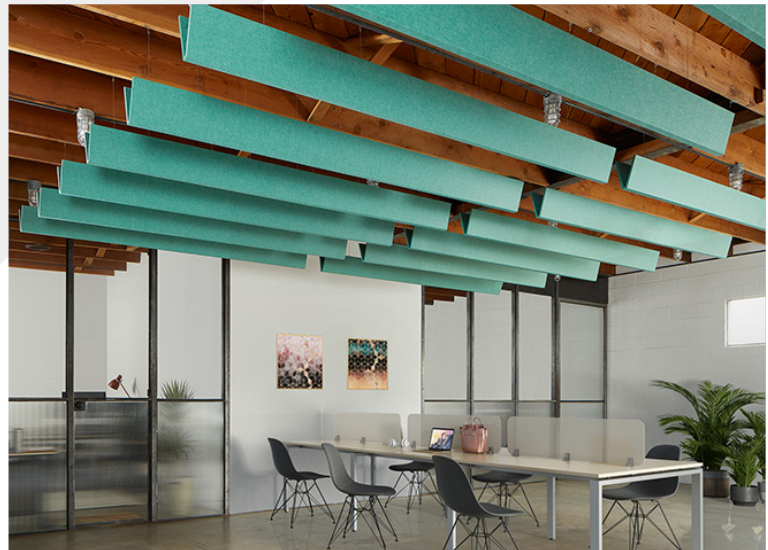


V-Baffle | Color 444 (Gray)



V-Baffle | Color 338 (Jade)

	Metric	Standard	Width	Weight	LF/Unit
40" Length	1016mm x 177.8mm	40 in. x 7 in.	133.4mm (5.3 in.)	2.6 lbs	3.3
48" Length	1219.2mm x 177.8mm	48 in. x 7 in.	133.4mm (5.3 in.)	3.2 lbs	4
72" Length	1828.8mm x 177.8mm	72 in. x 7 in.	133.4mm (5.3 in.)	4.8 lbs	6
96" Length	2438.4mm x 177.8mm	96 in. x 7 in.	133.4mm (5.3 in.)	6.3 lbs	8

All specs refer to singular products and not multiples unless specified. Due to the nature of the material, cutting and fabrication process, minor dimensional variances may occur.

V-Baffle

The EchoPanel® V-Baffle absorbs open space sounds while bringing linear beauty to the ceiling. The V-shaped baffle uses simple angles and hidden hardware for a clean, flat-bottom plane and a seamless design aesthetic. Hang EchoPanel V-Baffles in regular rows, random groupings, or with other baffle systems to create beautiful architectural design solutions. Custom configurations available.

NRC (SOUND ABSORPTION RATING): ASTM C423-90A

Standard EchoPanel® NRC acoustic data is available for acoustic calculations. Please contact Kirei for this test data.

Fire Rating

ASTM E84 Class C (Class A treatment available.)

VOC Emissions

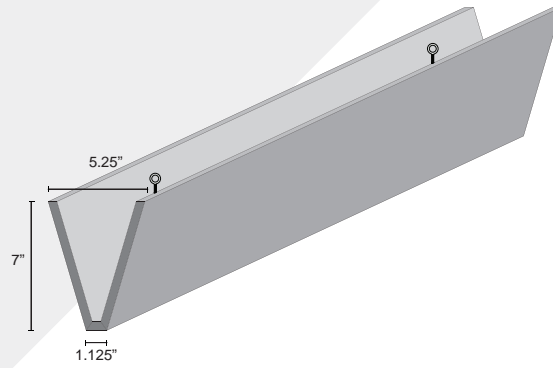
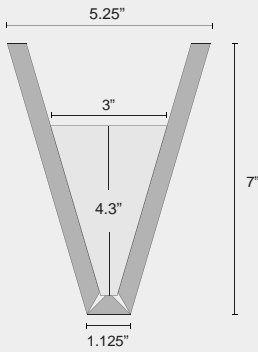
CDPH (CA 01350) Compliant; TVOC: <0.5 mg/m³
 Ecospecifier GreenTag Compliant;
 TVOC: 0.015 mg/m²/hr (ASTM D5116)



V-Baffle | Color 487 (Blush)

ECHOPANEL SYSTEMS: V-BAFFLE

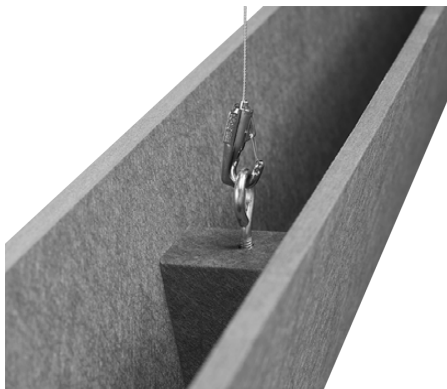
Dimension Detail



Available Solid Colors

101 Frost	108 Yellow	124 Ochre	151 Orange	193 Rouge	258 Red	269 Wine	273 Blue	274 Orchid
276 Lavender	295 Dark Orange	325 Viridian Green	330 Ivy	338 Jade	349 Vineyard	362 Green	365 Navy	381 Lime Splice
384 Seaweed	402 Taupe	442 Speckled Gray	444 Gray	454 Mushroom	468 Vanilla	487 Blush	500 White	542 Charcoal
550 Onyx	551 Teal	576 Magenta	579 Olive Green	580 Sage	633 Pacific	660 Coronet	908 Ivory	

Hardware & Installation



Eyebolt Mounting Hardware

Hanging Hardware

V-Baffles have two attachment points with a 1/4"-20 female thread and come with your choice of eyebolts or 1/4"-20 male threaded screw hardware.

To install V-Baffles, attach the specified ceiling mounting hardware and suspension cable/chain/rod/etc. with the appropriate connector at the bottom end. Once the ceiling hardware is installed, attach the connector to the supplied attachment hardware on the V-Baffle.

Note: Kirei does not provide ceiling mounting hardware or cable/chain/rod.