



EchoPanel Solids | Color Options



EchoPanel Solids | Color 442 (Speckled Gray)

| Style | Metric | Standard | Thickness | Weight | SF/Panel |
|------------|-----------------|------------------------|-----------|--------|----------|
| 7mm Panel | 1200mm x 2800mm | 47.24 in. x 110.24 in. | 7mm | 11 lbs | 36.2 |
| 12mm Panel | 1200mm x 2800mm | 47.24 in. x 110.24 in. | 12mm | 18 lbs | 36.2 |
| 24mm Panel | 1200mm x 2800mm | 47.24 in. x 110.24 in. | 24mm | 22 lbs | 36.2 |

All specs refer to singular products and not multiples unless specified. Due to the nature of the material, cutting and fabrication process, minor dimensional variances may occur. Custom options available upon request. EchoPanel is sold individually and ships flat.

EchoPanel

EchoPanel®, a registered trademark of Woven Image®, is a decorative, acoustically-absorbent panel with a felt-like finish that is made from 100% PET plastic, with at least 60% recycled content. EchoPanel is a low-VOC material, meeting requirements for LEED and other green building certifications. A Declared, Red-List Free material, EchoPanel qualifies for the Living Building Challenge.

Individual panels can be installed on walls and ceilings as well as in a variety of office furniture systems, wall panel systems and ceiling grid systems. Kirei’s collection of expertly-crafted EchoPanel acoustic design elements imagines the possibilities of a single panel, allowing designers to create truly memorable spacial experiences without the heavy-lifting. From decorative wall tiles to ceiling clouds and baffles, EchoPanel’s strength shows through it’s material simplicity and design versatility.

EchoPanel Print panels are a collection of hand screen-printed patterns that provide visual dynamics and acoustic control for walls and workstations. EchoPanel Prints are available in 12mm panels. Custom digital printing is also available.

Please note that not all colors come in all thicknesses. Refer to the sample board for color and size availability.



EchoPanel Prints | Pattern Trio 365

ECHOPANEL PANELS: SOLIDS & PRINTS

Sabins per 7mm EchoPanel

| Frequency | 250Hz | 500Hz | 800Hz | 1000Hz | 2000Hz | 4000Hz | NRC |
|---------------------------------------|-------|-------|-------|--------|--------|--------|---------------------|
| m ² /Object | 0.34 | 1.14 | 2.29 | 3.08 | 5.94 | 9.36 | 0.25 (no air gap) |
| m ² /Object (20mm air gap) | 1.03 | 2.74 | 5.25 | 6.86 | 10.28 | 11.31 | 0.45 (20mm air gap) |
| m ² /Object (50mm air gap) | 3.08 | 6.85 | 9.59 | 10.96 | 11.31 | 10.16 | 0.70 (50mm air gap) |

Sabins per 12mm EchoPanel

| Frequency | 250Hz | 500Hz | 800Hz | 1000Hz | 2000Hz | 4000Hz | NRC |
|--|-------|-------|-------|--------|--------|--------|----------------------|
| m ² /Object | 0.35 | 2.23 | 4.47 | 5.76 | 8.94 | 11.17 | 0.40 (no air gap) |
| m ² /Object (20mm air gap) | 1.65 | 4.35 | 7.53 | 9.29 | 11.64 | 11.17 | 0.55 (20mm air gap) |
| m ² /Object (50mm air gap) | 4.00 | 8.11 | 10.23 | 11.29 | 11.29 | 10.94 | 0.75 (50mm air gap) |
| m ² /Object (1" fiberglass) | 4.33 | 6.78 | 6.66 | 6.58 | 6.47 | 7.10 | 0.90 (1" fiberglass) |
| m ² /Object (2" fiberglass) | 6.56 | 7.35 | 7.03 | 6.49 | 6.60 | 6.80 | 1.00 (2" fiberglass) |

Sabins per 24mm EchoPanel

| Frequency | 250Hz | 500Hz | 800Hz | 1000Hz | 2000Hz | 4000Hz | NRC |
|--|-------|-------|-------|--------|--------|--------|----------------------|
| m ² /Object | 1.85 | 6.65 | 9.36 | 10.72 | 11.83 | 11.83 | 0.65 (no air gap) |
| m ² /Object (20mm air gap) | 2.59 | 8.13 | 11.33 | 12.57 | 12.57 | 12.20 | 0.75 (20mm air gap) |
| m ² /Object (50mm air gap) | 4.93 | 10.96 | 13.18 | 13.06 | 11.70 | 11.95 | 0.85 (50mm air gap) |
| m ² /Object (2" fiberglass) | 6.97 | 7.77 | 7.35 | 6.97 | 6.88 | 7.01 | 1.05 (2" fiberglass) |



EchoPanel Prints | Pattern Astro 462

Fire Rating

7mm panels: ASTM E84 Class C
(Class A achievable with treatment.)

12mm panels: ASTM E84 Class A

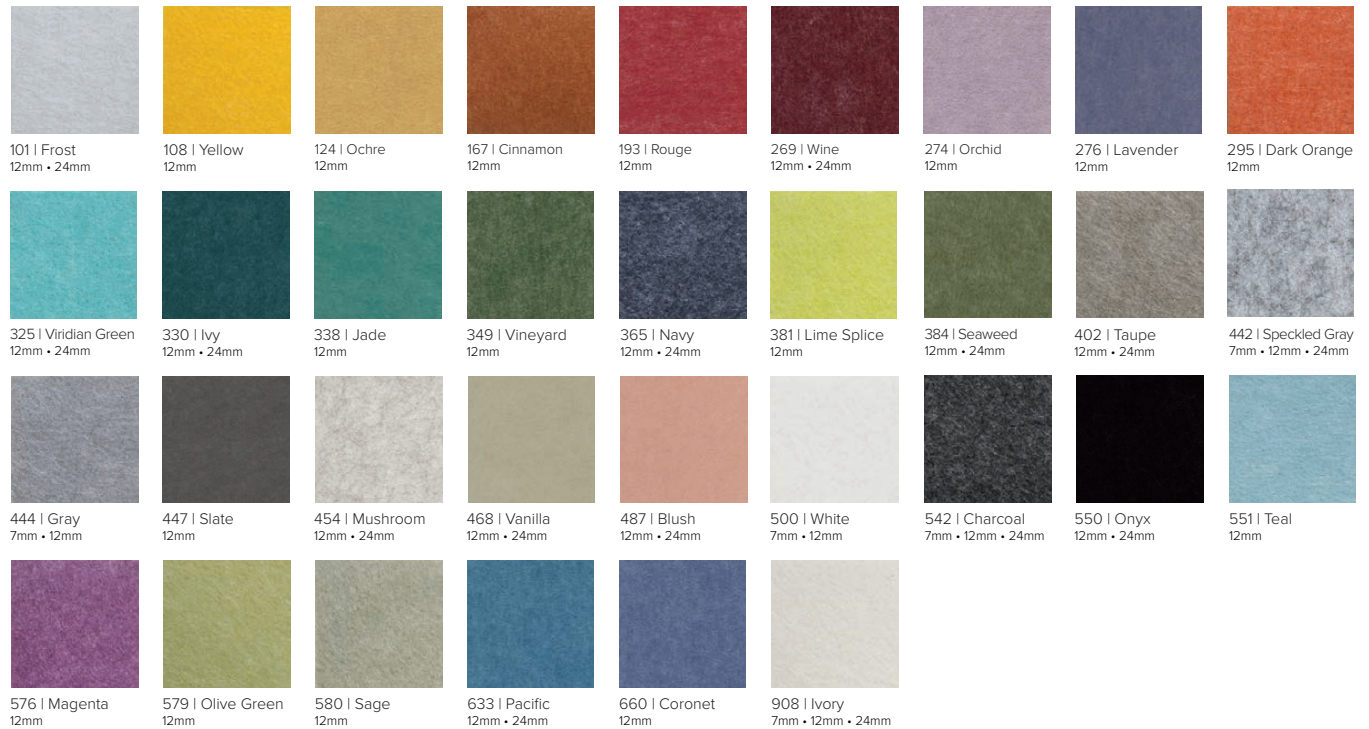
24mm panels: ASTM E84 Class B

VOC Emissions

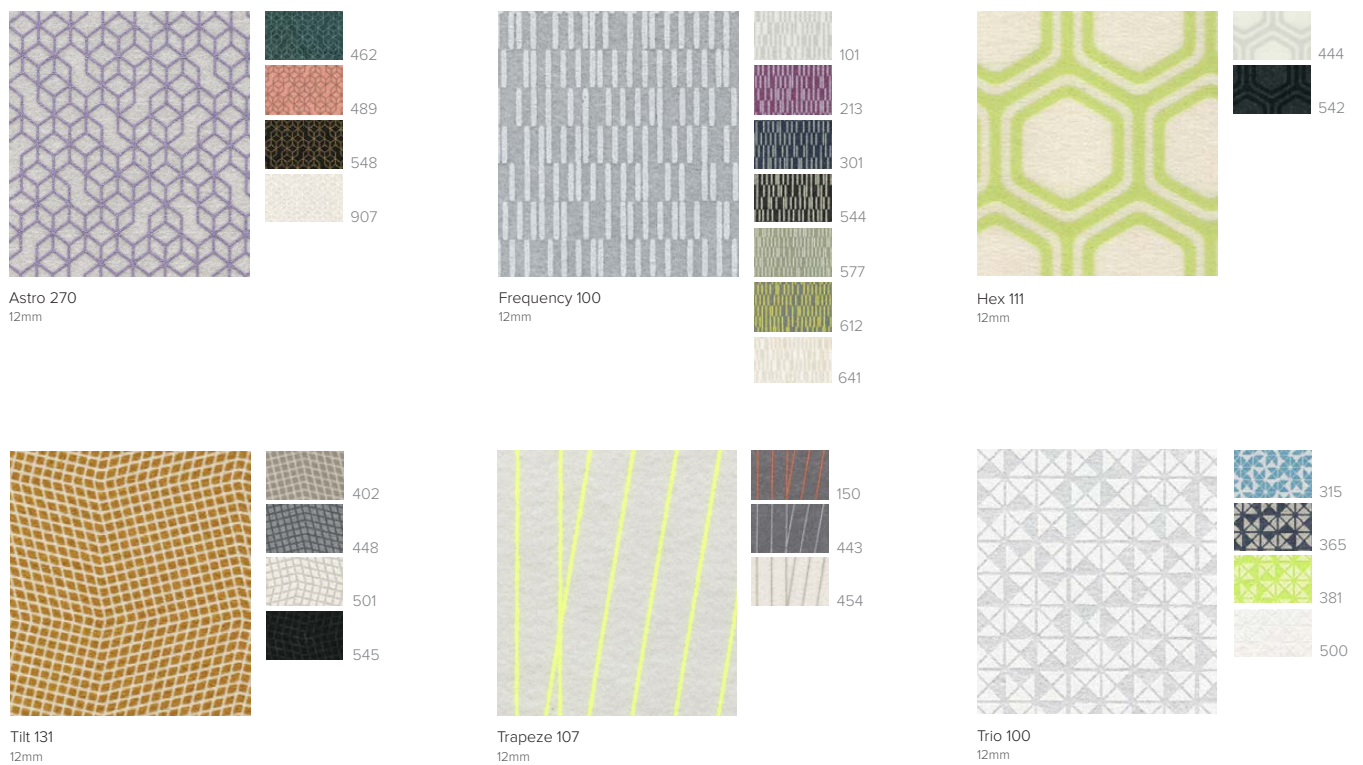
CDPH (CA 01350) Compliant; TVOC: <0.5 mg/m³

Ecospecifier GreenTag Compliant;
TVOC: 0.015 mg/m²/hr (ASTM D5116)

Available Solid Colors and Material Thickness



Available Prints & Material Thickness:



For pattern repeats and trimming instructions, please download the full spec sheet at kireiusa.com.

Note: EchoPanel Prints are hand screenprinted, and as such, some variation in color and pattern may occur.



EchoPanel Solids & Prints | Colors 381 (Lime Green), 444 (Gray), Pattern Trio 381

Installation

Panels can be installed on walls, ceilings, in office furniture systems and wall panel systems, used as decorative tiles, and even finished products. It is also tackable for a multipurpose solution in office spaces or educational facilities.

For instructions on how to install EchoPanel panels in a variety of ways, please visit our website and download our EchoPanel Panel Installation Guide.



EchoPanel Solids Custom Cut | Colors 442 (Speckled Gray), 542 (Charcoal)

Customization

EchoPanel can be digitally printed and custom cut with CNC, laser, water-jet or hand knife to make your design ideas come to life. For information on custom printing and cutting of EchoPanel, please contact Kirei.



EchoPanel Solids Custom Print | Color 500 (White)