

EchoTile Geometry Delta, Oblong & Square  
442 (Speckled Gray), 487 (Blush), 500 (White), & 542 (Charcoal)

Style	Metric	Standard	Thickness	Weight/Box	Qty/Box	SF/Box
Delta Tile	200mm x 200mm x 277mm	7.9 in. x 7.9 in. x 10.9 in.	12mm	3 lbs	20	4.31
Hex Tile	200mm x 200mm	7.9 in. x 7.9 in.	12mm	3 lbs	10	3.33
Oblong Tile	100mm x 200mm	3.9 in. x 7.9 in.	12mm	3 lbs	20	4.31
Penta Tile	245mm x 185mm	9.7 in. x 7.3 in.	12mm	3 lbs	10	3.50
Square Tile	200mm x 200mm	7.9 in. x 7.9 in.	12mm	3 lbs	10	4.31

All specs refer to singular products and not multiples unless specified. Due to the nature of the material, cutting and fabrication process, minor dimensional variances may occur. Custom options available upon request.

## Sound Absorption

Frequency	250Hz	500Hz	800Hz	1000Hz	2000Hz	4000Hz	NRC
m <sup>2</sup> /Object	0.70	2.20	4.30	5.74	8.66	10.57	0.45 (no air gap)
m <sup>2</sup> /Object (20mm air gap)	1.51	4.33	7.35	8.56	9.97	9.97	0.60 (20mm air gap)
m <sup>2</sup> /Object (50mm air gap)	3.32	7.35	9.87	10.07	9.67	10.07	0.75 (50mm air gap)
m <sup>2</sup> /Object (1" fiberglass)	4.33	6.78	6.66	6.58	6.47	7.10	0.90 (1" fiberglass)
m <sup>2</sup> /Object (2" fiberglass)	6.56	7.35	7.03	6.49	6.60	6.80	1.00 (2" fiberglass)

Acoustic data is measured in Sabins per Geometry Tile.

## EchoTile Geometry

Peel-and-stick Geometry tiles can quickly transform your space both visually and acoustically. These bold, geometric tiles are a decorative surface finish offering acoustic performance with a felt-like finish. They are produced from 100% PET (Polyethylene Terephthalate) which, contains at least 60% post-consumer content.

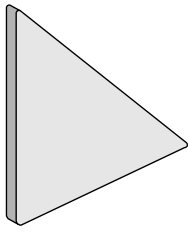
### Fire Rating

ASTM E84 Class A

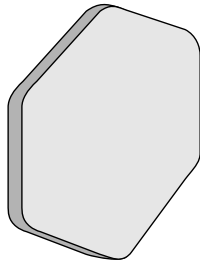
### VOC Emissions

CDPH (CA 01350) Compliant; TVOC: <0.5 mg/m<sup>3</sup>  
Ecospecifier GreenTag Compliant; TVOC: 0.015 mg/m<sup>2</sup>/hr (ASTM D5116)

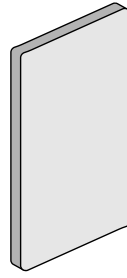
## Available Design Styles



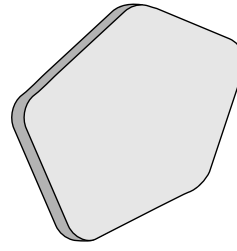
Delta Tile



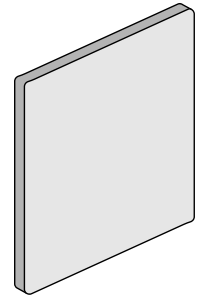
Hex Tile



Oblong Tile



Penta Tile



Square Tile

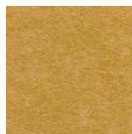
## Available Solid Colors



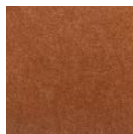
101 | Frost



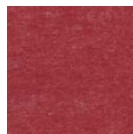
108 | Yellow



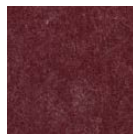
124 | Ochre



167 | Cinnamon



193 | Rouge



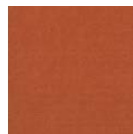
269 | Wine



274 | Orchid



276 | Lavender



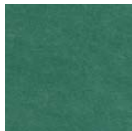
295 | Dark Orange



325 | Viridian Green



330 | Ivy



338 | Jade



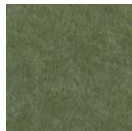
349 | Vineyard



365 | Navy



381 | Lime Splice



384 | Seaweed



402 | Taupe



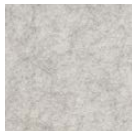
442 | Speckled Gray



444 | Gray



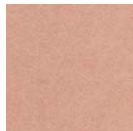
447 | Slate



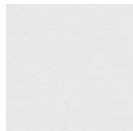
454 | Mushroom



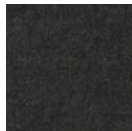
468 | Vanilla



487 | Blush



500 | White



542 | Charcoal



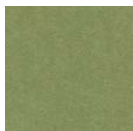
550 | Onyx



551 | Teal



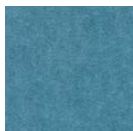
576 | Magenta



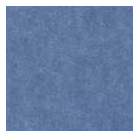
579 | Olive Green



580 | Sage



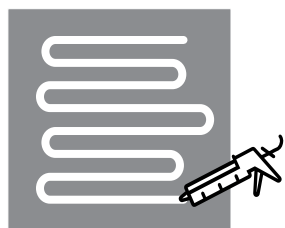
633 | Pacific



660 | Coronet



908 | Ivory



## Installation

When mounting, use standard construction adhesives (e.g. Liquid Nails/Titebond - NOT PVA glue). Clean and prepare surface per adhesive guidelines. Spread adhesive evenly on panel back, leaving 2" space at edges. Adhere to wall surface, providing bracing to hold material against surface per adhesive open time/instructions.