

EchoEdge Pulse | Color 660 (Coronet)

| Style | Metric        | Standard        | Depth                    | Weight/Box | Qty/Box | SF/Box |
|-------|---------------|-----------------|--------------------------|------------|---------|--------|
| Level | 2743mm x 76mm | 108 in. x 3 in. | 51mm (2 in.)             | 20 lbs     | 10      | 21.75  |
| Pulse | 2743mm x 76mm | 108 in. x 3 in. | 38mm-70mm (1.5-2.75 in.) | 20 lbs     | 10      | 21.75  |
| Wave  | 2743mm x 76mm | 108 in. x 3 in. | 51mm (2 in.)             | 18 lbs     | 10      | 21.75  |

A box comes with 10 fins and 10 slabs. When fins and slabs are assembled, the product measures 29 in. (length). All specs refer to singular products and not multiples unless specified. Due to the nature of the material, cutting and fabrication process, minor dimensional variances may occur.

**Sound Absorption**

| Frequency              | 250Hz | 500Hz | 800Hz | 1000Hz | 2000Hz | 4000Hz | NRC  |
|------------------------|-------|-------|-------|--------|--------|--------|------|
| m <sup>2</sup> /Object | 0.87  | 2.94  | 4.42  | 4.82   | 5.35   | 6.62   | 0.50 |

Acoustic data is measured in Sabins per EchoEdge.

**EchoEdge**

Create radical sound-absorbing feature walls with EchoEdge’s modular fin system made from 12mm thick recycled PET panels. Crafted by iconic designer Michael DiTullo to tune out the noise and turn up the funky design, EchoEdge delivers a tactile wall experience ideal for spaces in need of low profile, high absorption acoustic design. Three standard styles are available - Level, Wave and Pulse, or customize for branding or other space-defining design possibilities.

**Fire Rating**

ASTM E84 Class A

**VOC Emissions**

CDPH (CA 01350) Compliant; TVOC: <0.5 mg/m<sup>3</sup>  
 Ecospecifier GreenTag Compliant;  
 TVOC: 0.015 mg/m<sup>2</sup>/hr (ASTM D5116)



EchoEdge Wave | Color 349 (Vineyard)

# ECHOPANEL: ECHOEDGE

## Available Design Styles



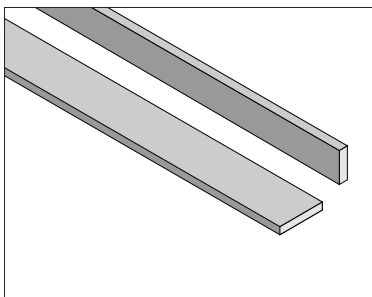
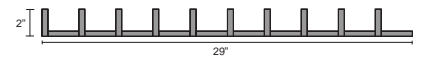
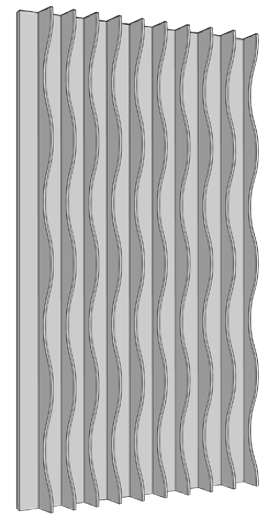
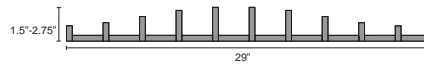
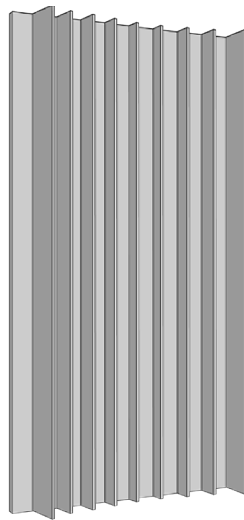
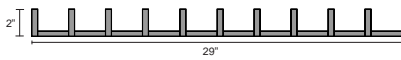
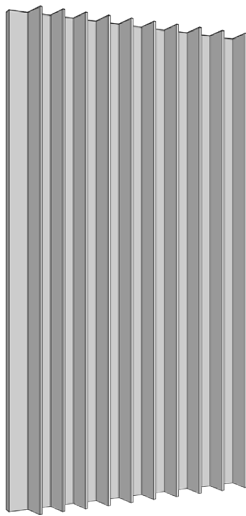
Level



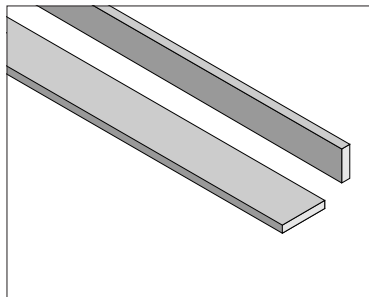
Pulse



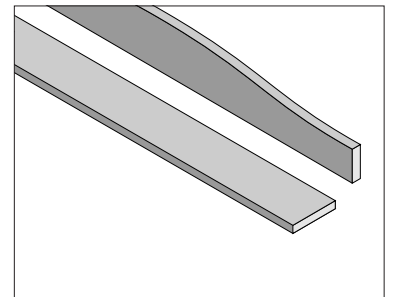
Wave



Each box of EchoEdge Level comes with 10 slabs (left) of the same depth, width, and height as well as 10 fins (right) of the same depth, width, and height.



Each box of EchoEdge Pulse comes with 10 slabs (left) of the same depth, width, and height as well as 10 fins (right) of varying depths and the same width and height.



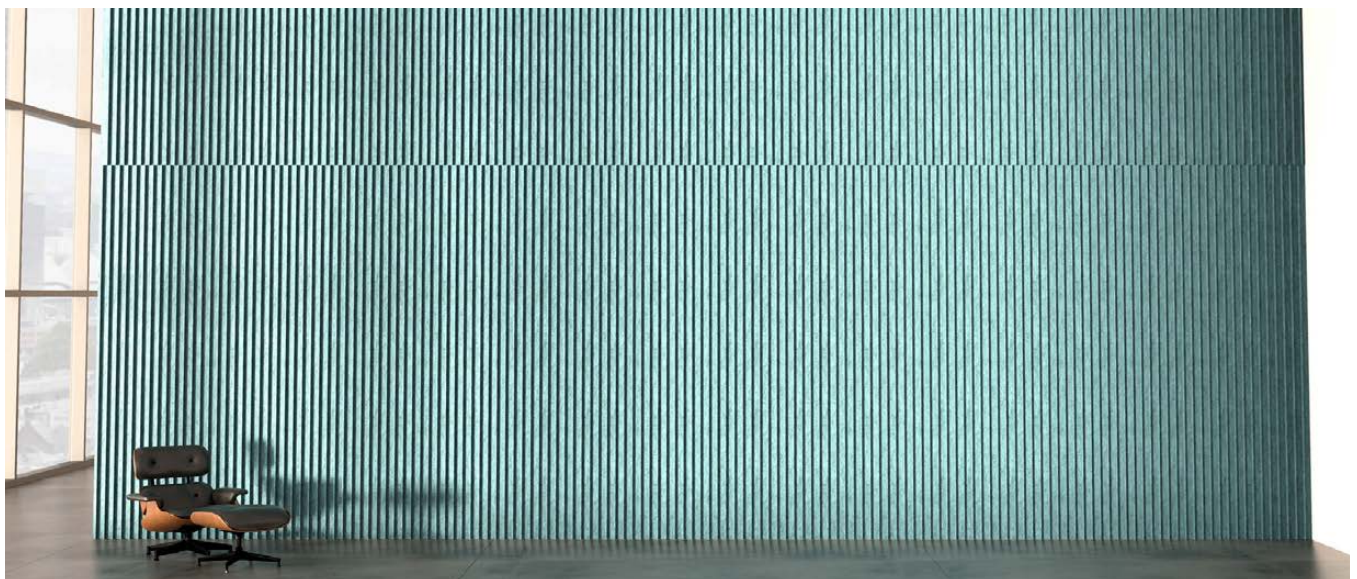
Each box of EchoEdge Wave comes with 10 slabs (left) of the same depth, width, and height as well as 10 fins (right) of the same depth, width, and height.

Available Solid Colors



Installation

EchoEdge’s step-and-repeat installation is fast and designed to limit waste. The fins can be cut on-site making it a breeze to cut around switches and outlets, and trim to size. The modular system pairs well with imperfect walls and not-so-level ceilings with forgiving installation that helps it adapt to any space. Mount to walls or other surfaces with standard construction adhesive and you’re good to go.



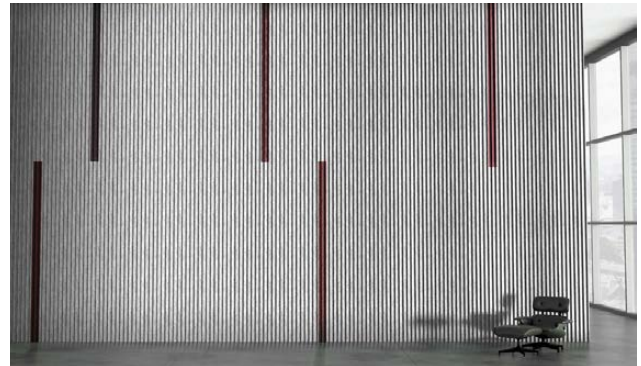
EchoEdge Level with Offset Double-Height Installation | Color 325 (Viridian Green)

## Customization

EchoEdge's infinite amount of customizable fin styles and palette of 33 colors means your concept sketch is a close reality. Connect through company branding, delight with experiential design, or mix colors to infuse fun – EchoEdge is primed for center stage.



EchoEdge Custom Logo | Color 325 (Viridian Green)



EchoEdge Level | Colors 442 (Speckled Gray) and 269 (Wine)



EchoEdge Custom Traveling Peaks | Color 551 (Teal)



EchoEdge Level with Curved Wall Installation | Color 487 (Blush)



EchoEdge Level with Ceiling Installation | Color 576 (Magenta)



EchoEdge Custom Triangles | Color 276 (Lavender)