



kirei

ECHOTILE VEE

Acoustic Tiles

Vee Tiles are a modular acoustic tile with a distinct v-cut groove patterning. The CNC-cut notch styling links together across tiles and can be oriented in a variety of directions to create multiple looks. Mix and match colors or use large color zones to boldly define spaces and control sound.

Product shown: Vee Tiles in Colors 381 (Lime Splice), 442 (Grey), 444 (Smoke), & 551 (Duck Egg)

This image is supplied by Woven Image®.

Specs

Style	Standard (LxH)	Thickness	Weight/Box	Qty/Box	SF/Box
Vee Tile	19.68 in. x 19.68 in.	0.47 in.	12 lbs	10	26.92

All specs refer to singular products and not multiples unless specified. Due to the nature of the material, cutting and fabrication process, minor dimensional variances may occur. Custom options available upon request.

Designer	Kirei
Panel Thickness	12mm EchoPanel®
Material	EchoPanel®, a registered trademark of Woven Image®, is PET felt made with at least 60% post-consumer content.
Fire Rating	ASTM E84 Class A
Custom Options	Available upon request
Lead Time	*In stock for immediate shipment
VOC Emissions	CDPH (CA 01350) Compliant TVOC: <0.5 mg/m ³ Ecospecifier GreenTag Compliant TVOC: 0.015 mg/m ² /hr (ASTM D5116)

*Actual lead times are determined when the project goes into production and can change based on production schedule and all quantities, color and thicknesses being in stock at time of order. See [Kirei's Product Lead Time Disclosure](#) for more information.

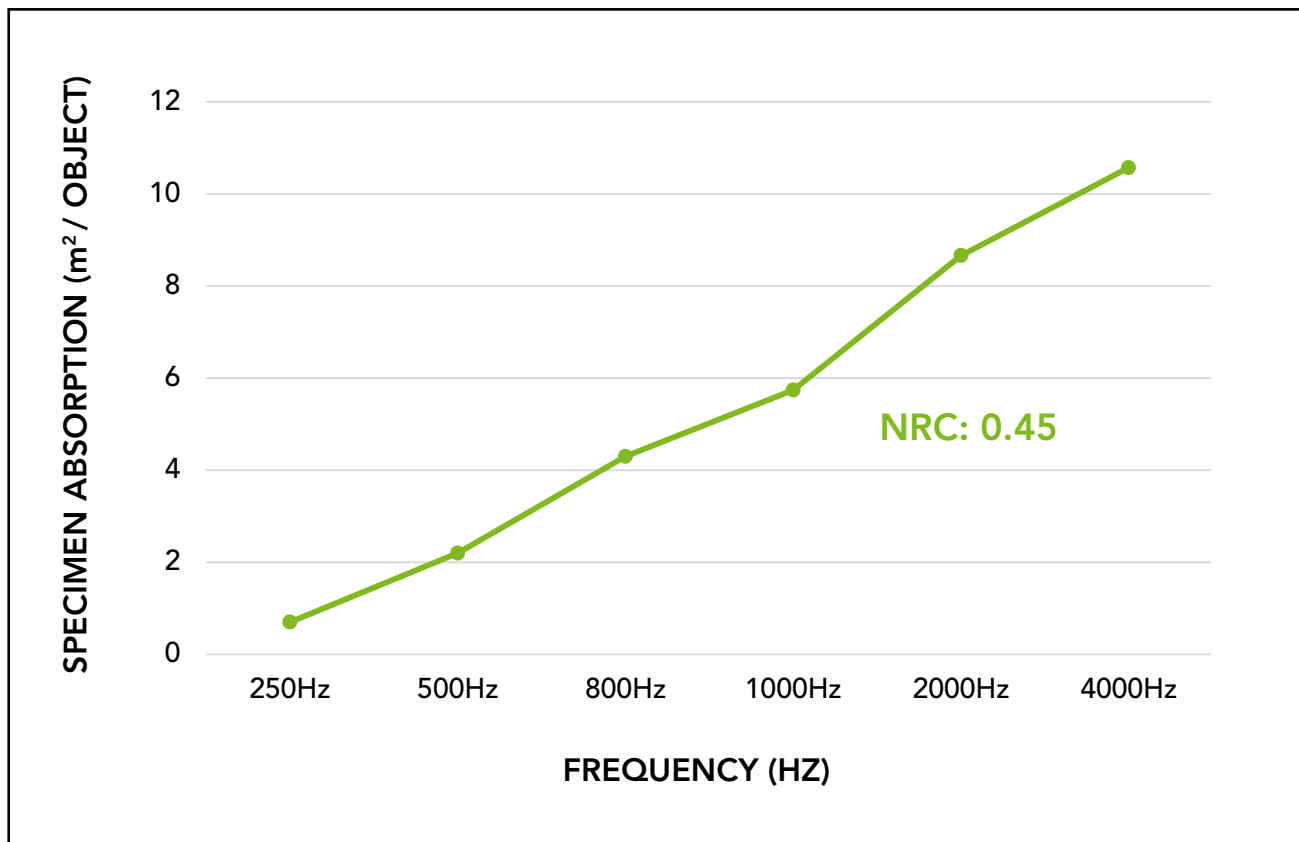


Acoustic Data

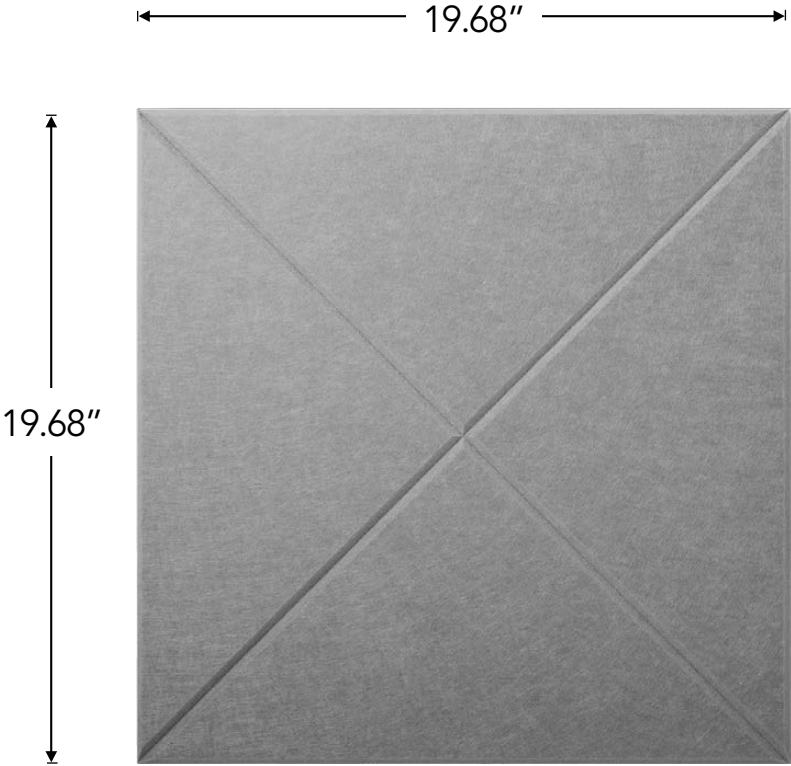
Sound Absorption

Frequency	250Hz	500Hz	800Hz	1000Hz	2000Hz	4000Hz	NRC
m ² /Object	0.70	2.20	4.30	5.74	8.66	10.57	0.45 (no air gap)
m ² /Object (20mm air gap)	1.51	4.33	7.35	8.56	9.97	9.97	0.60 (20mm air gap)
m ² /Object (50mm air gap)	3.32	7.35	9.87	10.07	9.67	10.07	0.75 (50mm air gap)
m ² /Object (1" fiberglass)	4.33	6.78	6.66	6.58	6.47	7.10	0.90 (1" fiberglass)
m ² /Object (2" fiberglass)	6.56	7.35	7.03	6.49	6.60	6.80	1.00 (2" fiberglass)

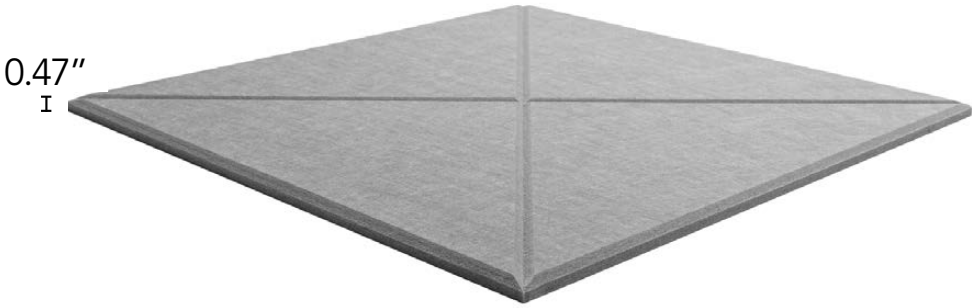
Acoustic data is measured in Sabins per 12mm EchoPanel.



Product Dimensions



Vee Tile



Available Colors



101 Frost



108 Sunshine



124 Ochre



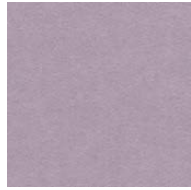
167 Cinnamon



193 Rouge



269 Wine



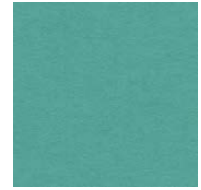
274 Orchid



276 Lavender



295 Mandarin



325 Viridian



330 Ivy



338 Jade



349 Vineyard



365 Navy



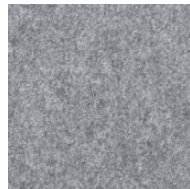
381 Lime Splice



384 Olive



402 Pebble



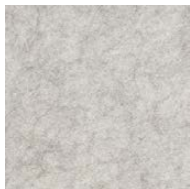
442 Grey



444 Smoke



447 Slate



454 Mushroom



468 Vanilla



487 Blush



500 White



542 Black



550 Onyx



551 Duck Egg



576 Magenta



579 Pistachio



580 Sage



633 Pacific



660 Coronet



908 Cream

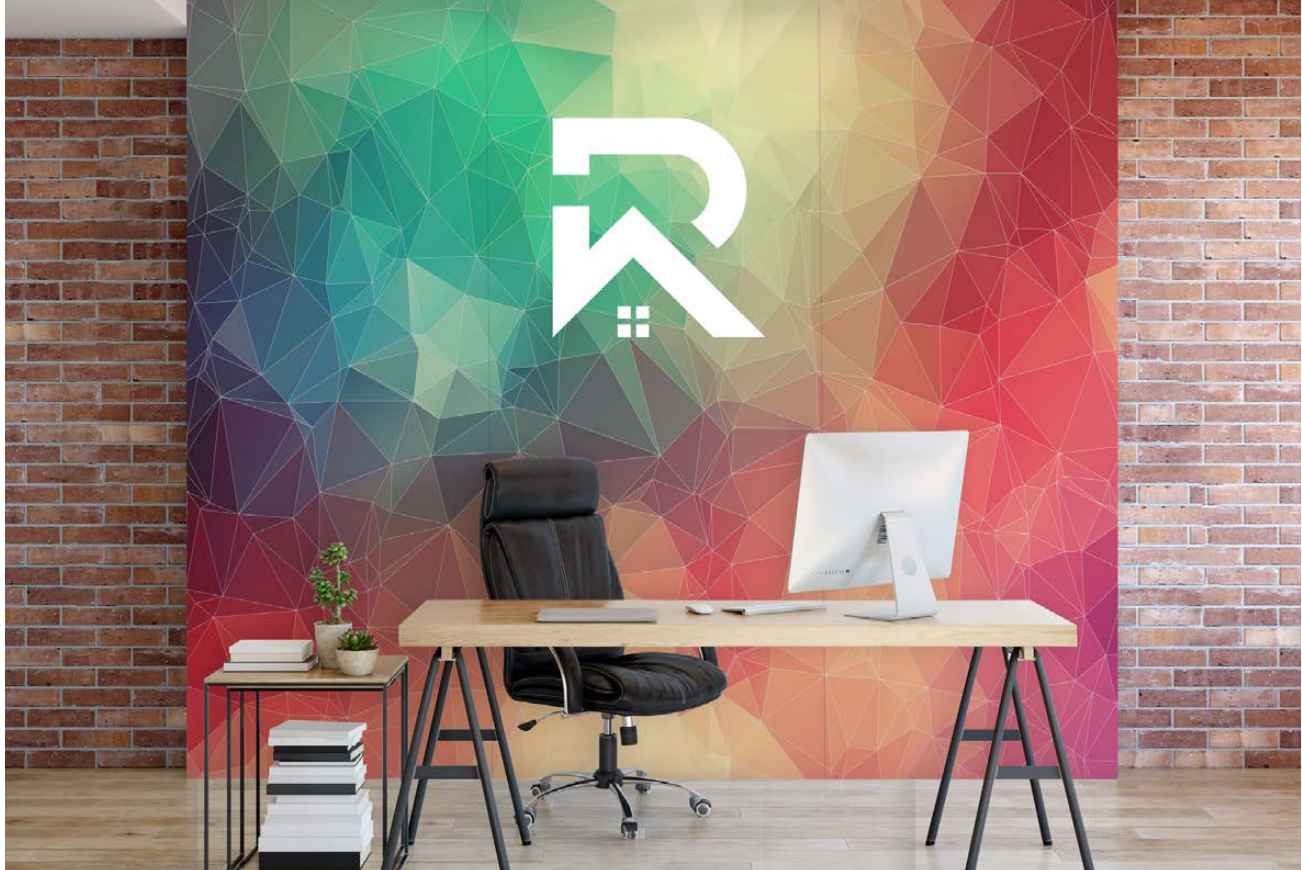
Installation

When mounting, use standard construction adhesives (e.g. Liquid Nails/Titebond - NOT PVA glue). Clean and prepare surface per adhesive guidelines. Spread adhesive evenly on panel back, leaving 2" space at edges. Adhere to wall surface, providing bracing to hold material against surface per adhesive open time/instructions. For more information, see the [EchoTile Vee Installation Guide](#).

Custom Printing with Kirei Ink

Vee Tiles can be custom printed in house with Kirei Ink. We would love to work with you to print your own custom color, pattern, graphic or material. Reach out and our team will be ready to assist!

Please note: Kirei requires written permission from the copyright holder in order to reproduce any copyrighted work. Professional photographs cannot be reproduced without written permission from the photographer.



Product shown: Kirei Ink Custom Printing



Product shown: Vee Tiles in Colors 365 (Navy) & 454 (Mushroom)



Product shown: Vee Tiles in Color 338 (Jade)
This image is supplied by Woven Image®.

kirei

Learn more and request your free sample:

619.236.9924 | sales@kireiusa.com

kireiusa.com