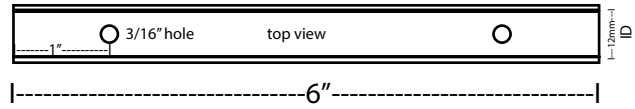
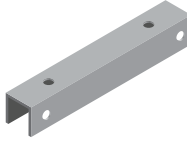


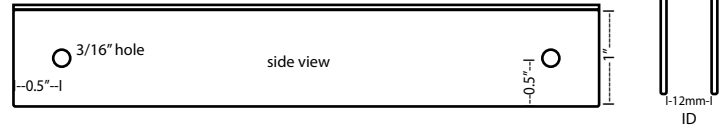
ECHOPANEL SIMPLE BAFFLE U-CHANNEL SELECTION GUIDE

Use our U-Channel mounting brackets to attach EchoPanel Simple Baffles to ceilings and other surfaces using cable or other mounting hardware.

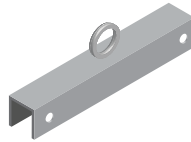
DUC: Direct Mount U-Channel



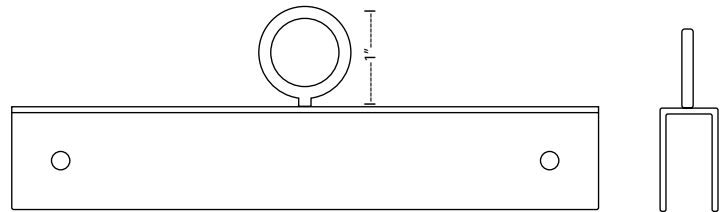
The Direct Mount U-Channel (DUC) Bracket offers a flush, low profile mounting ideal for direct attachment to hard surface ceilings.



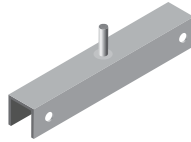
EUC: Eyebolt U-Channel



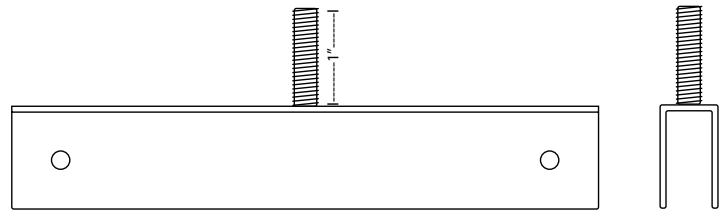
The Eyelet U-Channel (EUC) Bracket can be paired with a looped aircraft cable, s-hook or chain, providing a fast and simple hanging solution.



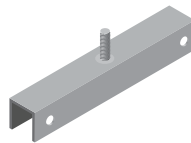
MUC: Male U-Channel



The Male U-Channel (MUC) Bracket is designed for compatibility with a variety of standard 1/4"-20 thread-based mounting hardware, including ACT grid mounting clips.



FUC: Female U-Channel



The Female U-Channel (FUC) Bracket is designed for compatibility with a variety of standard 1/4"-20 thread-based mounting hardware, including ACT grid mounting clips, threaded rod ceiling anchors or 1/4"-20 eyebolt, enabling easy adjustment when paired with cables or chain.

