



Topo Tile: Barcode I Color 444 (Gray)



Topo Tile: Pixel I Color 101 (Frost)



Topo Tile: Pixel I Color 381 (Lime Green)

	Metric	Standard	Thickness	Weight/Box	Qty/Box	SF/Box
Pixel Tile	254mm x 254mm	10 in. x 10 in.	24mm	7 lbs	16	11.1
Barcode Tile	393.7mm x 196.9mm	15.5 in. x 7.8 in.	24mm	8 lbs	12	10

All specs refer to singular products and not multiples unless specified.

Topo Tiles

Add visual appeal, texture and sound absorption to any flat wall with these 3-D tiles! Designed to be staggered, rotated, or aligned, Topo Tiles can be configured in numerous ways, offering a variety of design possibilities. Plus, the 36% layered coverage adds more sound absorption and diffusion! Installing Topo Tiles is easy; simply use standard construction adhesive suitable for PET plastic and wall surfaces and you're all set!

NRC (SOUND ABSORPTION RATING): ASTM C423-90A

Topo Tile Barcode: NRC .60
 Topo Tile Pixel: Please contact Kirei for this test data.

Fire Rating

ASTM E84 Class C (Class A treatment available.)

VOC Emissions

CDPH (CA 01350) Compliant; TVOC: <0.5 mg/m3
 Ecospecifier GreenTag Compliant;
 TVOC: 0.015 mg/m2/hr (ASTM D5116)



Topo Tile: Barcode I Color 442 (Speckled Gray)

ECHOPANEL TILES: TOPO

Available Topo Tiles Styles



Topo Tile: Barcode



Topo Tile: Pixel

Available Solid Colors



101 | Frost



108 | Yellow



151 | Orange



258 | Red



273 | Blue



276 | Lavender



295 | Dark Orange



325 | Viridian Green



330 | Ivy



338 | Jade



362 | Green



365 | Navy



381 | Lime Green



402 | Taupe



442 | Speckled Gray



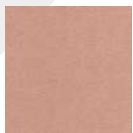
444 | Gray



454 | Mushroom



468 | Vanilla



487 | Blush



500 | White



542 | Charcoal



550 | Onyx



551 | Teal



576 | Magenta



579 | Olive Green

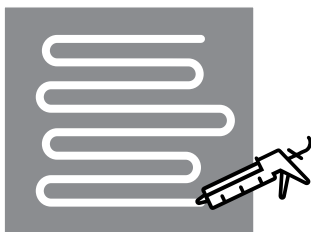


580 | Sage



908 | Ivory

Installation



Mount

When mounting use standard construction adhesives (e.g. Liquid Nails/Titebond - NOT PVA glue). Clean and prepare surface per adhesive guidelines. Spread adhesive evenly on panel back, leaving 2" space at edges. Adhere to wall surface, providing bracing to hold material against surface per adhesive open time/instructions.